

I, J. Dean Stiles, certify that this plat was drawn under my supervision from an actual survey made under my supervision (as described in Book 59, Page 1000 Book 59, Page 1000) that the boundaries not shown as herein these plat was from data information that the ratio of precision as calculated is 1/100000 that this survey creates a subdivision of land within the jurisdiction of Stokes County and municipality that has an ordinance that regulates parcels of land (S.S. 47-30(11)) that this plat was prepared in accordance with G.S. 47-30 as amended.
 Witness my original signature, registration number and seal this 10 day of May 2006
 Signed J. Dean Stiles PLS No. L-2818

STOKES COUNTY, NORTH CAROLINA
 Filed for registration at 9:30 o'clock A.M. This 9 day of May 2006
 and incorporated in Plat Book 2, Page 154
Kathy Young Register of Deeds
James B. Hardy Deputy R. of D.

CERTIFICATE OF APPROVAL FOR RECORDING BY ENFORCEMENT OFFICER
 I, hereby certify that this subdivision plot shown hereon has been found to comply with the subdivision regulations of King, North Carolina, with the exception of such variances, if any, as noted in the minutes of the Planning Board and recorded on the plat and it has been approved for recording in the office of the Register of Deeds.
5-2-06 Date
Gregory J. Loft Enforcement Officer, City of King

LINE	BEARING	LENGTH
1	N 09°04'58"W	284.33
2	N 21°34'37"W	186.23
3	S 11°31'54"W	548.81
4	S 26°05'24"W	653.15
5	S 08°03'17"W	294.90
6	S 28°25'38"W	274.49
7	S 87°13'01"E	656.22
8	N 02°17'14"E	526.03
9	N 02°17'14"E	526.03
10	N 02°17'14"E	526.03
11	N 02°17'14"E	526.03
12	N 02°17'14"E	526.03
13	N 02°17'14"E	526.03
14	N 02°17'14"E	526.03
15	N 02°17'14"E	526.03
16	N 02°17'14"E	526.03
17	N 02°17'14"E	526.03
18	N 02°17'14"E	526.03
19	N 02°17'14"E	526.03
20	N 02°17'14"E	526.03
21	N 02°17'14"E	526.03
22	N 02°17'14"E	526.03
23	N 02°17'14"E	526.03
24	N 02°17'14"E	526.03
25	N 02°17'14"E	526.03
26	N 02°17'14"E	526.03
27	N 02°17'14"E	526.03
28	N 02°17'14"E	526.03
29	N 02°17'14"E	526.03
30	N 02°17'14"E	526.03
31	N 02°17'14"E	526.03
32	N 02°17'14"E	526.03
33	N 02°17'14"E	526.03
34	N 02°17'14"E	526.03
35	N 02°17'14"E	526.03
36	N 02°17'14"E	526.03
37	N 02°17'14"E	526.03
38	N 02°17'14"E	526.03
39	N 02°17'14"E	526.03
40	N 02°17'14"E	526.03
41	N 02°17'14"E	526.03
42	N 02°17'14"E	526.03
43	N 02°17'14"E	526.03
44	N 02°17'14"E	526.03
45	N 02°17'14"E	526.03
46	N 02°17'14"E	526.03
47	N 02°17'14"E	526.03
48	N 02°17'14"E	526.03
49	N 02°17'14"E	526.03
50	N 02°17'14"E	526.03
51	N 02°17'14"E	526.03
52	N 02°17'14"E	526.03
53	N 02°17'14"E	526.03
54	N 02°17'14"E	526.03
55	N 02°17'14"E	526.03
56	N 02°17'14"E	526.03
57	N 02°17'14"E	526.03
58	N 02°17'14"E	526.03
59	N 02°17'14"E	526.03
60	N 02°17'14"E	526.03
61	N 02°17'14"E	526.03
62	N 02°17'14"E	526.03
63	N 02°17'14"E	526.03
64	N 02°17'14"E	526.03
65	N 02°17'14"E	526.03
66	N 02°17'14"E	526.03
67	N 02°17'14"E	526.03
68	N 02°17'14"E	526.03
69	N 02°17'14"E	526.03
70	N 02°17'14"E	526.03
71	N 02°17'14"E	526.03
72	N 02°17'14"E	526.03
73	N 02°17'14"E	526.03
74	N 02°17'14"E	526.03
75	N 02°17'14"E	526.03
76	N 02°17'14"E	526.03
77	N 02°17'14"E	526.03
78	N 02°17'14"E	526.03
79	N 02°17'14"E	526.03
80	N 02°17'14"E	526.03
81	N 02°17'14"E	526.03
82	N 02°17'14"E	526.03
83	N 02°17'14"E	526.03
84	N 02°17'14"E	526.03
85	N 02°17'14"E	526.03
86	N 02°17'14"E	526.03
87	N 02°17'14"E	526.03
88	N 02°17'14"E	526.03
89	N 02°17'14"E	526.03
90	N 02°17'14"E	526.03
91	N 02°17'14"E	526.03
92	N 02°17'14"E	526.03
93	N 02°17'14"E	526.03
94	N 02°17'14"E	526.03
95	N 02°17'14"E	526.03
96	N 02°17'14"E	526.03
97	N 02°17'14"E	526.03
98	N 02°17'14"E	526.03
99	N 02°17'14"E	526.03
100	N 02°17'14"E	526.03



FILED May 09, 2006
 AT 09:30 am
 BOOK 00008
 START PAGE 0154
 END PAGE 0154
 INSTRUMENT # 03510

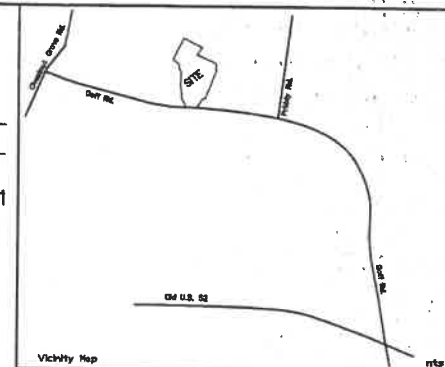
FILED
 STOKES COUNTY
 KATHY YOUNG
 REGISTER OF DEEDS

Charles O. Dalton Family LLC
 DB. 443, Pg. 1508
 Zoned RA

EMERALD DRIVE

Prestwick, Sec. 1
 PB. 7, Pg. 145

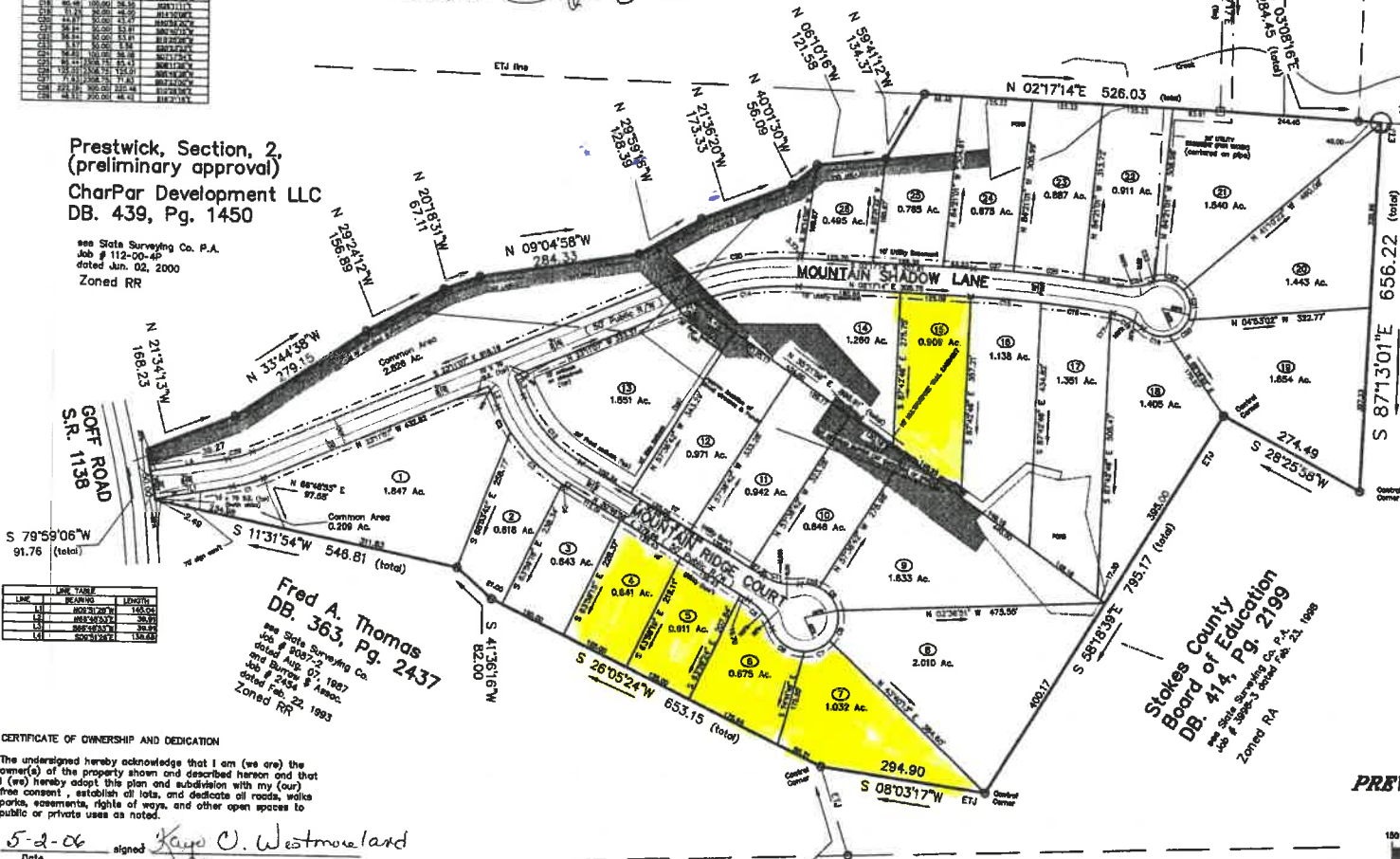
see State Surveying Co. P.A.
 Job # 2-00-3R
 dated Jan. 04, 2000
 Zoned CU-R



NOTES: Irons placed at all Lot corners, points of curvature, and points of tangency unless otherwise noted.
 No HNS or NCGS horizontal control within 2,000 Ft. of property.

Prestwick, Section, 2,
 (preliminary approval)
 CharPar Development LLC
 DB. 439, Pg. 1450

see State Surveying Co. P.A.
 Job # 112-00-0P
 dated Jan. 02, 2000
 Zoned RR



Certificate of Approval of the Design and Installation of Streets, Utilities, and other Required Improvements.

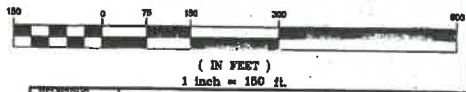
I, hereby certify that all streets, utilities and other required improvements have been installed in an acceptable manner and according to the City of King's specifications and standards in the subdivision or that guarantee the installation of the required improvements in an amount and manner satisfactory to the City of King has been received, and that the filing fee for this plat, in the amount of \$ has been paid.

5-8-06 Date
T. Scott R... City Engineer, City of King, N.C.

SITE DATA

Total Area	35.033 Ac. (coord.)
Area in Lots	28.672 Ac.
Common Area	3.035 Ac.
Area in Streets	3.326 Ac.
Area in Public use sites	Multipurpose Trail 1278'
Number of lots	26
Property is Zoned	RR

PLAT OF
MOUNTAIN SHADOWS
 (REVISED)
 PREVIOUSLY RECORDED IN PB. 7, Pg. 433
 GRAPHIC SCALE



CERTIFICATE OF OWNERSHIP AND DEDICATION
 The undersigned hereby acknowledge that I am (we are) the owner(s) of the property shown and described hereon and that I (we) hereby adopt this plan and subdivision with my (our) free consent, establish all lots, and dedicate all roads, walks, parks, easements, rights of ways, and other open spaces to public or private uses as noted.
5-2-06 Date signed Kays O. Westmoreland Owner

Stokes County
 Board of Education
 DB. 207, Pg. 628
 DB. 211, Pg. 809

see Plat by Marvin S. Cavanaugh
 Job # 98-129E
 dated Jan. 08, 1997
 Zoned RR

- LEGEND
- Property Line
 - Right of Way
 - Conveyance
 - Edge of Easement
 - Point
 - Existing iron
 - Iron placed
 - Survey marker
 - Planted stone
 - Nail

NOTE: This plat is subject to any Easements, Agreements, or Rights of Way of record prior to date of this plat, which were not visible at the time of inspection.

State of North Carolina, County of STOKES
 I, James O. Dalton Review Officer of Stokes County, certify that the map or plat to which this certificate is affixed meets all statutory requirements for recording.
James O. Dalton Review Officer

Developer: Townhome Construction
 PO Box 1597
 King, N.C. 27021

REVISIONS	PLAT FOR			
1-17-06 add comments	TOWNHOME CONSTRUCTION			
RECORD REFERENCES: DB. 473, Pg. 1703 Tax ID 5993 0136 3045				
Owner: Townhome Construction				
Scale	Date	Township	County	State
1 in. = 150 ft.	Dec. 14, 2005	Yadkin	Stokes	N.C.
Job No.	SLATE SURVEYING CO. P.A.		Drawn by: H.P. G.J. Jde	
698-05-3R	P.O. Box 1082 King, N.C. 27081 336/763-8745		Checked by: J.d.s.	